



MAP ACADEMY

INTRODUCING COVID-19 POOLED TESTING IN SCHOOL

February 10, 2021

Map Academy Charter School

Rachel Babcock - rbabcock@themapacademy.org

Josh Charpentier - jcharpentier@themapacademy.org

508-830-9500

Meeting Objectives



Explain new pooled testing program



Share how to sign up



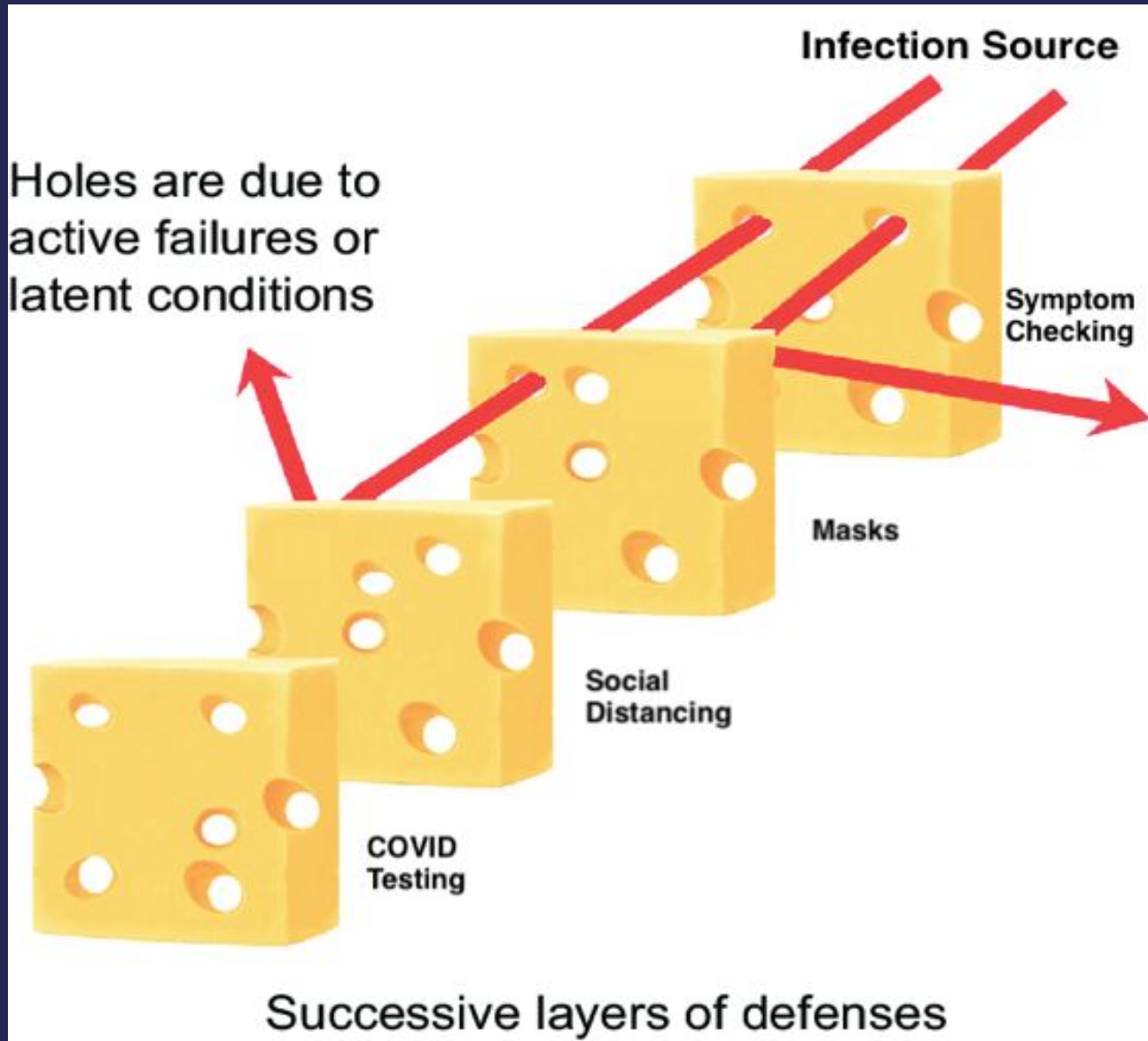
Answer questions



WHY POOLED TESTING IN SCHOOLS

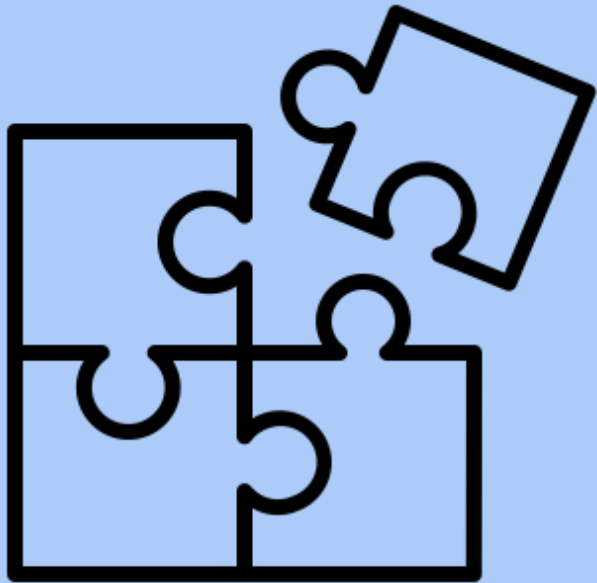
How Pooled Testing works in Schools





TESTING IS
ONE MORE
LAYER OF
PROTECTION

Testing is Just One Piece of the COVID-19 Safety Puzzle



We will continue to:

- **Require masks to be worn at all times (except lunch and masks breaks)**
- **Maintain 6 ft of distance between students**
- **Ensure high quality ventilation**
- **Require regular handwashing**
- **Contact trace any positive case**

Why Pooled Testing

- **Increases safety: primary benefit is to identify cases, including asymptomatic cases**
- Builds confidence and trust in safety of school buildings, staff, and students.
- Understand Coronavirus incidence in schools/town on an ongoing basis
- Encourage importance of safety measures among families out of school
- Prepare for and perhaps accelerate return to in person schooling, enhancing the education of our kids

Testing is Voluntary & Free to Families

- The Massachusetts Department of Elementary and Secondary education is paying for districts to launch testing for the first six weeks
- After the first 6 weeks, we will be using other funding sources to pay for testing until it is no longer needed.
- **COVID-19 testing works best when more students sign up!**

Types of COVID-19 Tests

Diagnostic Tests

determine if the coronavirus is currently present in an individual

Antibody or Serology

tests look for antibodies in the blood to identify those who may have had the virus & developed immunity. Tests have many accuracy problems

Types of COVID-19 Tests

Diagnostic Tests

determine if the coronavirus is currently present in an individual

Antibody or Serology

tests look for antibodies in the blood to identify those who may have had the virus & developed immunity. Tests have many accuracy problems

Molecular Tests

look for the virus' genetic material and are highly accurate. These tests are mostly done in a central lab and can take 24-48 hours for results. Includes both PCR and Next Generation Sequencing Tests

Antigen Tests

look for viral proteins, are less accurate than molecular tests (particularly in those with low viral loads). They can be rapid (results in minutes) and used on site without sending samples to lab

Types of COVID-19 Tests

Diagnostic Tests

determine if the coronavirus is currently present in an individual

Antibody or Serology

tests look for antibodies in the blood to identify those who may have had the virus & developed immunity. Tests have many accuracy problems

Molecular Tests

look for the virus' genetic material and are highly accurate. These tests are mostly done in a central lab and can take 24-48 hours for results. Includes both PCR and Next Generation Sequencing Tests

Antigen Tests

look for viral proteins, are less accurate than molecular tests (particularly in those with low viral loads). They can be rapid (results in minutes) and used on site without sending samples to lab

**BinaxNOW
Rapid Test**

Types of COVID-19 Tests

Molecular Tests

look for the virus' genetic material and are highly accurate. These tests are mostly done in a central lab and can take 24-48 hours for results. Includes both PCR and Next Generation Sequencing Tests

Pooled Tests

combine multiple samples and test them at once, yielding one result for the group

Individual Tests

one sample



one result

Types of COVID-19 Tests

Molecular Tests

look for the virus' genetic material and are highly accurate. These tests are mostly done in a central lab and can take 24-48 hours for results. Includes both PCR and Next Generation Sequencing Tests

Pooled Tests

combine multiple samples and test them at once, yielding one result for the group

**Massachusetts School
Pooled Testing**

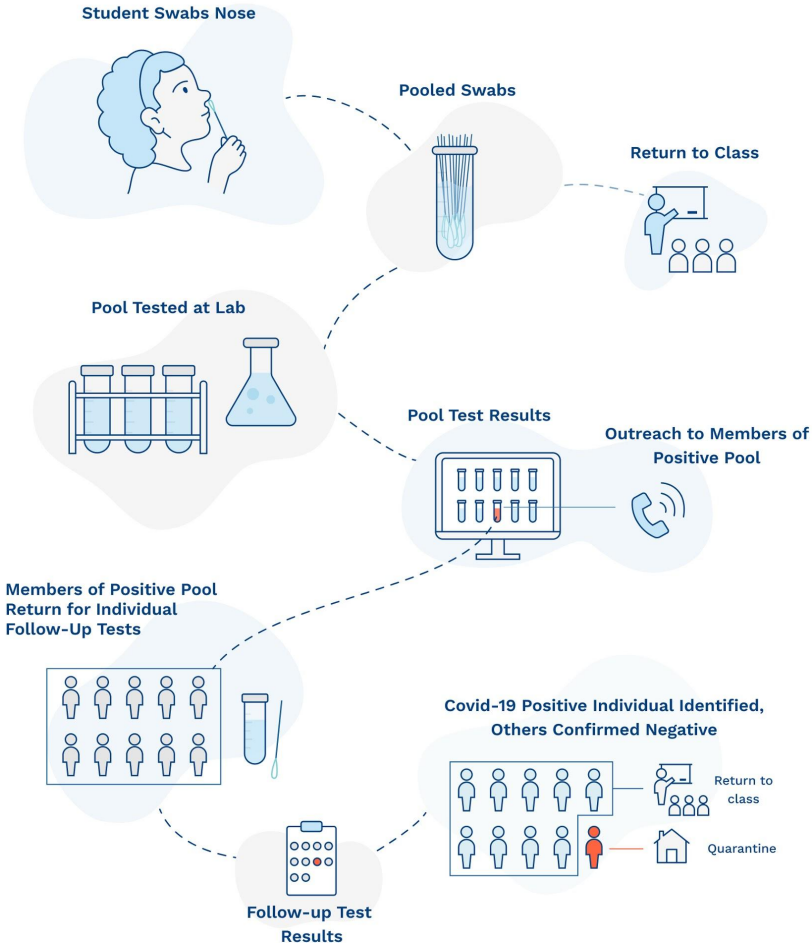
Individual Tests

one sample



one result

How Pooled Testing Works in Schools



For details on setting up follow-up testing, please review our [Follow-up Testing Guide](http://www.covidedtesting.org) available for download at www.covidedtesting.org



It's Painless, & Most Students Can Self-Swab





HOW COVID-19 TESTING AT MAP ACADEMY WORKS

First, Sign the Consent Form to Opt your Student in to Testing

- You only have to sign once for the entire program
- By signing the consent form, you consent to:
 - Your student receiving a pooled test and, if needed, an individual follow-up test.
 - Your student's information being transmitted via provided technology. All technology is secure and compliant with data privacy laws.
- Map Academy will begin with paper consent forms. We are in the process of adding an electronic version of the form to our website and will distribute the link via email as soon as it is ready. We anticipate that there will also be an opportunity to provide consent directly through the testing provider's portal.

Once Testing Starts:








- On their assigned day, students will swab themselves. The swab will be placed into a pool test tube along with swabs from other students in the pooled group.
- 24-48 hours later – pooled testing results will come to the school.
 - *If your student is in a pool that is negative, you will not hear anything*
 - *If your student is in a pool that is positive, your student will receive a follow-up test*

Follow-Up Testing

- If your student is in a positive pool, they will be asked to take a follow-up test.

Here's how it works:

- WHEN: Next in person day
- WHERE: Map Academy Nurse's Office
- For follow-up testing we use the BinaxNOW Test

	(SUNDAY)MONDAY	TUESDAY	WEDNESDAY	THURSDAY	FRIDAY/(SATURDAY)
<p>IN PERSON TODAY</p>	MWF STUDENTS	TUE/THUR STUDENTS	MWF STUDENTS	TUE/THUR STUDENTS	MWF STUDENTS
<p>POOL TESTING SAMPLE COLLECTION</p> <p> Morning</p>				TUE/THUR STUDENTS AND STAFF: SAMPLES COLLECTED FOR POOLED TESTING	MWF STUDENTS: SAMPLES COLLECTED FOR POOLED TESTING
<p> POOL RESULTS RETURNED & OUTREACH TO POSITIVE POOLS TO RETURN FOR FOLLOW UP TESTS</p> <p> Afternoon</p> <p>Expect <5% of pools to be positive</p>	MWF STUDENT POOLED TEST RESULTS RECEIVED (SUNDAY)				TUE/THUR STUDENT AND STAFF POOLED TEST RESULTS RECEIVED (FRIDAY EVENING OR SATURDAY)
<p> FOLLOW-UP TESTING FOR ANYONE IN A POSITIVE POOL</p> <p> Morning</p> <p>Location: Map Academy Nurse's Office</p>	MONDAY: STUDENT FOLLOW-UP TESTING STAFF FOLLOW-UP TESTING	STUDENT FOLLOW-UP TESTING			
<p> INDIVIDUAL RESULTS RETURNED & CONTACT TRACING BEGINS</p> <p> Evening</p> <p>Expect 1 positive per positive pool</p>	MONDAY: STUDENT AND STAFF INDIVIDUAL RESULTS AND CONTACT TRACING	STUDENT INDIVIDUAL RESULTS AND CONTACT TRACING			

OUR WEEKLY TESTING SCHEDULE



QUESTIONS?

Rachel Babcock - rbabcock@themapacademy.org
Josh Charpentier - jcharpentier@themapacademy.org
508-830-9500

